

# Delta-Fin™ SF

**Delta T Solutions**  
Engineering, Integrating, Innovating Systems

## High-Output Heating System

*The durable DELTA-FIN™ SF aluminum finned heating system offers a high-output heating solution to fit any grower's needs.*



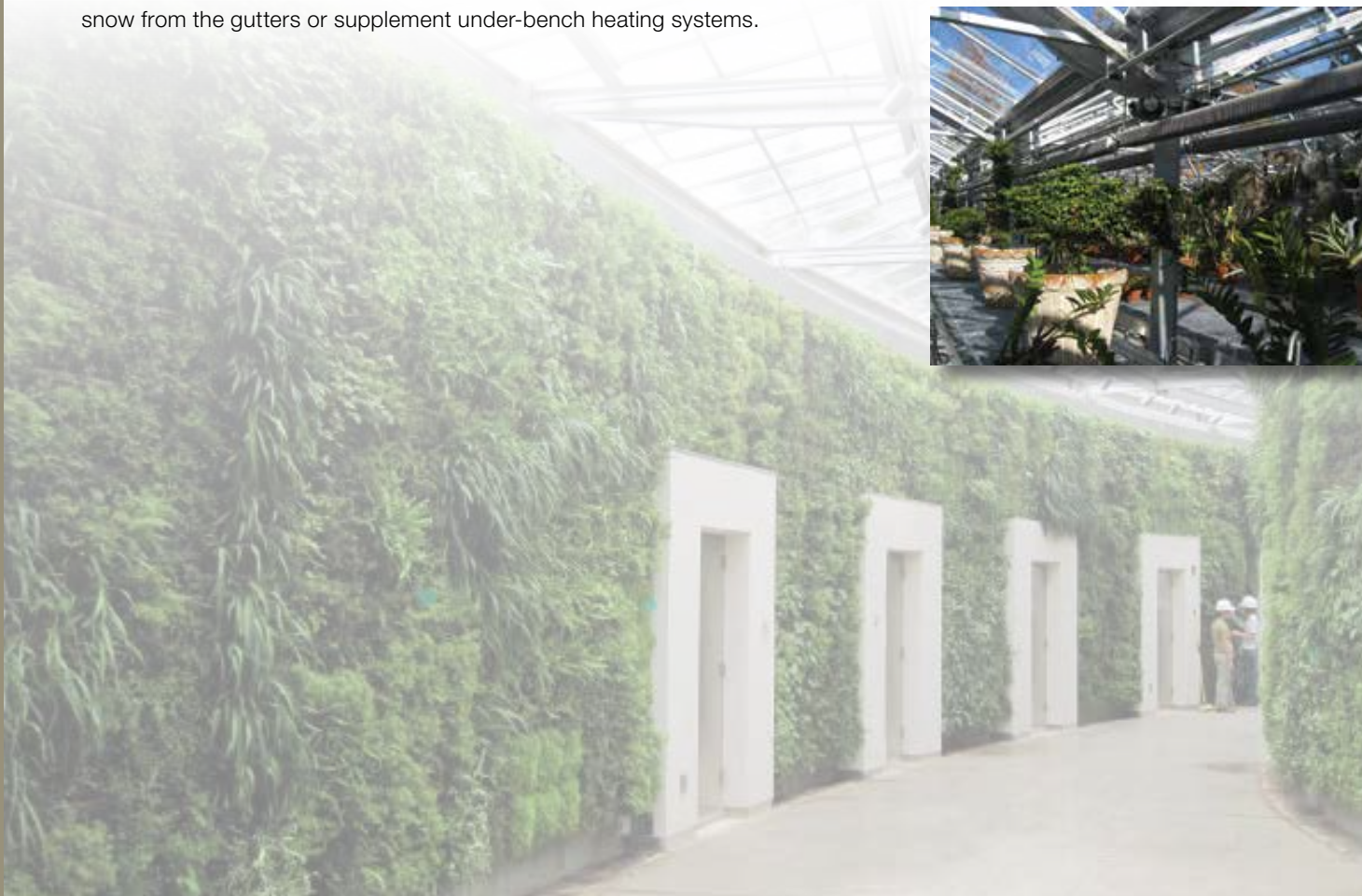
### **The DELTA-FIN™ SF High-Output Heating System**

includes several expertly engineered components that work in conjunction with one another to create a cohesive system that can be customized to growers' specifications. The system is the culmination of years of research and development by Delta T Solutions to create the standard by which this material is used. The end result is a highly durable yet easy-to-install complete heating system that offers the high output growers desire.



### **How It Works**

Using water temperatures up to 230°F, the all-aluminum fin tubes heat greenhouses by natural convection. Placed around the perimeter or under the gutter, this material emits enough energy to heat a greenhouse range, melt snow from the gutters or supplement under-bench heating systems.





## The Benefits

- Heavy-duty construction resists oxidation and guarantees a long life in a harsh environment. Components won't oxidize or rust like those made of copper or steel would.
- Finned pipe is made of schedule 40 aluminum pipe, and fins are twice as thick as standard baseboard radiators.
- Material can be hung from greenhouse columns spaced as far as 13 feet apart without additional center support.
- Two sizes (1.25-inch and 2-inch) allow for application flexibility when designing long runs or small temperature differentials requiring high flow rates.
- Grooved aluminum coupling absorbs enough expansion from the heated aluminum pipe that in most installations, no special expansion joints are needed. Grooved coupling also requires no threading or welding.
- Customized fin configurations can be provided for under-gutter snow melt or corridor heating for optimum heat output.

## What's Included

The system includes the following components, all manufactured to Delta T's specifications to work seamlessly as a complete system:

- **Fin** – Available in two sizes (1.25-inch and 2-inch), allowing for multiple spacings. Special spacings can be used for specific output requirements. The industrial-strength aluminum fin can be run in long lengths up to 13 feet and will resist bending. Lightweight aluminum construction allows for hanging material from columns or posts without special support.

- **Couplings** – The cast-aluminum couplings have EPDM rubber gaskets with pressure ratings of up to 300 psi. The grooved coupling technology absorbs expansion from the heated aluminum.
- **Elbows** – Cast-aluminum elbows have special outputs for venting and draining the system.
- **Hanger Brackets** – For sidewall and column and post installation, the all-aluminum hanger brackets allow for expansion and contraction. Truss brackets are also available.
- **Cover System** – Utilizing flattened, expanded-aluminum material, the cover system is heavy duty to protect and enhance the DELTA-FIN™ system. It is also available in other materials, including stainless-steel. It includes corner assemblies, end cap assemblies and a cover bracket assembly.

## Performance packages include:

The system includes the following components, all manufactured to Delta T's specifications to work seamlessly as a complete system:

- Heating system components (heat source, controls and radiation)
- Performance-engineered drawings (pipe layouts and electrical diagrams)
- Installation supervision and installation (as required)



DELTA-FIN™ SF-125



Aluminum Elbow and Couplers



DELTA-FIN™ SF Cover System

Contact your local Delta T Solutions Representative for additional details.



**Delta T Solutions**  
Engineering, Integrating, Innovating Systems